

# PIGTRONIX

# *SPACE RIP*

## User's Guide



# ***CONTENTS***

***03***

---

Introduction

***04***

---

Explanation of Controls

***05***

---

Warranty

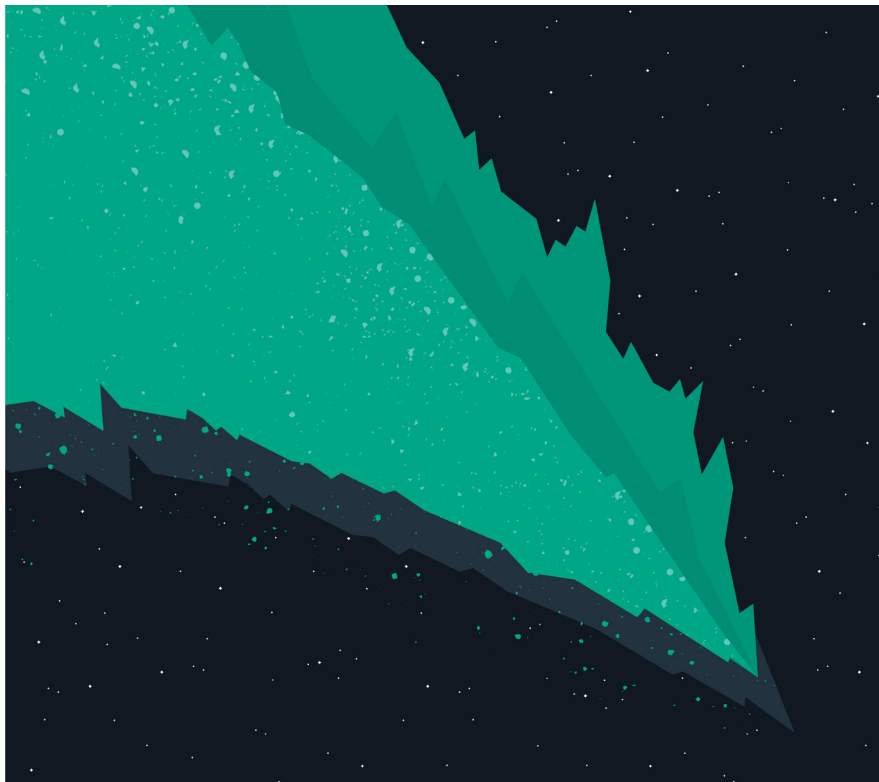
***07***

---

Contact Information

# ***LIKE TEARING THE FABRIC OF SPACETIME.***

Space Rip is an analog synth pedal featuring pulse width modulated (PWM) sawtooth and square wave voices in multiple octaves. A state-of-the-art tracking engine allows the Space Rip to keep up with your fastest single note lines, replicating both pitch and dynamics. Sounds like tearing the fabric of spacetime in half. Pulse width of the square and sawtooth waveforms produced by the onboard VCO is kept in a state of flux, generating constant harmonic motion controlled by the Rate knob. The Sub knob adds an additional voice one octave down from the input signal, while the Octave switch drops the entire synth down an additional octave, producing a devastating amount of pure analog synth bass. Runs on standard 9VDC.



# EXPLANATION OF CONTROLS



- 1** **Rate:** Sets the speed of PWM modulation.
- 2** **Tune:** Sets the fine tuning of the synth voices.
- 3** **Mix:** Sets the blend between clean and synth sounds.
- 4** **Sub:** Sets the volume of a second oscillator that is one octave below the first oscillator.

- 5** **Shape:** Selects between Square wave and Sawtooth waveforms for the oscillators. When the switch is pushed in, a square wave is selected. When the switch is not pushed in, a sawtooth wave is selected.
- 6** **Octave:** Selects different octave settings for the oscillators. When the switch is pushed in, oscillator 1 is tuned one octave lower than the note you are playing and sub oscillator 2 is tuned two octaves below the note you are playing. When the switch is not pushed in, oscillator 1 is tuned in unison with the note you are playing and sub oscillator 2 is tuned one octave below the note you are playing.

Moon Pool requires a negative tip, 9VDC power supply.  
Moon Pool does not take batteries.

## ***PIGTRONIX LIMITED WARRANTY***

Your new Pigtronix product is warranted to be free from defects in materials and workmanship for 1 year from the original date of purchase. Warranty applies only to the original retail purchaser of a registered Pigtronix product, subject to the limitations contained in this warranty.

THIS WARRANTY IS EXTENDED TO THE ORIGINAL RETAIL PURCHASER OF PIGTRONIX PRODUCTS BOUGHT ON OR AFTER JANUARY 1, 2020 ONLY AND MAY NOT BE TRANSFERRED OR ASSIGNED TO SUBSEQUENT OWNERS. IN ORDER TO VALIDATE YOUR WARRANTY, AND AS A CONDITION PRECEDENT TO WARRANTY COVERAGE HEREUNDER, YOU MUST REGISTER YOUR PRODUCT WITHIN THIRTY (30) DAYS FOLLOWING THE ORIGINAL DATE OF PURCHASE. YOUR PROOF OF PURCHASE OR SALES RECEIPT MUST ACCOMPANY ALL REQUESTS FOR WARRANTY COVERAGE— YOU MAY SUBMIT YOUR RECEIPT ON THE REGISTRATION FORM. IF YOU DO NOT REGISTER THE PRODUCT WITHIN 30 DAYS OF PURCHASE, YOUR PRODUCT WILL NOT BE SERVICED UNDER WARRANTY.

If your product is destroyed, lost or damaged beyond repair while in the possession of Pigtronix for repair, Pigtronix will replace that product with one of the same or most similar style of a value not in excess of the original purchase price of your pedal. Any insurance covering the pedal, including but not limited to collector's value insurance, must be carried by you at your expense.

This warranty covers the cost of both labor and materials on repairs deemed necessary by our Customer Service Representative.

THIS WARRANTY DOES NOT COVER:

- Any product that has been altered or modified in any way or upon which the serial number has been tampered with or altered.
- Any product whose warranty has been altered or upon which false information has been given.
- Any product that has been damaged due to misuse, negligence, accident, or improper operation.
- The subjective issue of tonal characteristics.
- Shipping damages of any kind.
- Any product that has been subjected to extremes of humidity or temperature
- Normal wear and tear
- Any product that has been purchased from an unauthorized dealer, or upon which unauthorized repair or service has been performed.

PIGTRONIX MAKES NO OTHER EXPRESS WARRANTY OF ANY KIND WHATSOEVER. ALL IMPLIED WARRANTIES, INCLUDING WARRANTIES OF MERCHANTABILITY AND FITNESS FOR A PARTICULAR PURPOSE, EXCEEDING THE SPECIFIC PROVISIONS OF THIS WARRANTY ARE HEREBY DISCLAIMED AND EXCLUDED FROM THIS WARRANTY. SOME STATES AND/OR COUNTRIES DO NOT ALLOW THE EXCLUSION OR LIMITATION OF IMPLIED WARRANTIES SO THAT THE ABOVE MAY NOT APPLY TO YOU. PIGTRONIX SHALL NOT BE LIABLE FOR ANY SPECIAL, INDIRECT CONSEQUENTIAL, INCIDENTAL OR OTHER SIMILAR DAMAGES SUFFERED BY THE PURCHASER OR ANY THIRD PARTY, INCLUDING, WITHOUT LIMITATION. DAMAGES FOR LOSS OF PROFITS OR BUSINESS OR DAMAGES RESULTING FROM USE OR PERFORMANCE OF THE PRODUCT, WHETHER IN CONTRACT OR IN TORT, EVEN IF PIGTRONIX OR ITS AUTHORIZED REPRESENTATIVE HAS BEEN ADVISED OF THE POSSIBILITY OF SUCH DAMAGES, AND PIGTRONIX SHALL NOT BE LIABLE FOR ANY EXPENSES, CLAIMS, OR SUITS ARISING OUT OF OR RELATING TO ANY OF THE FOREGOING.

**Steps To File for Warranty Coverage:**

1. Register your new guitar at <http://pigtronix.com/warranty>
2. Complete the warranty request form available at <http://pigtronix.com/support> and we will handle it from there!

# ***CONTACT INFORMATION***

## **Address**

Bond Audio LLC  
141 W 28th St, Floor 4  
New York, NY, 10001

## **Phone**

631-331-7447

## **Email**

[info@pigtronix.com](mailto:info@pigtronix.com)

## **Warranty Service Email**

[support@pigtronix.com](mailto:support@pigtronix.com)

## **Warranty Contact Form**

[pigtronix.com/warranty](http://pigtronix.com/warranty)

## **Website**

[pigtronix.com](http://pigtronix.com)

## **YouTube**

[youtube.com/pigtronix](https://youtube.com/pigtronix)



**Product manuals are offered digitally in an attempt to be mindful of our environment.  
We ask that you consider the same before printing at home. Thank you!**