

PIGTRONIX

GAMMA DRIVE

User's Guide



CONTENTS

03

Introduction

04

Explanation of Controls

05

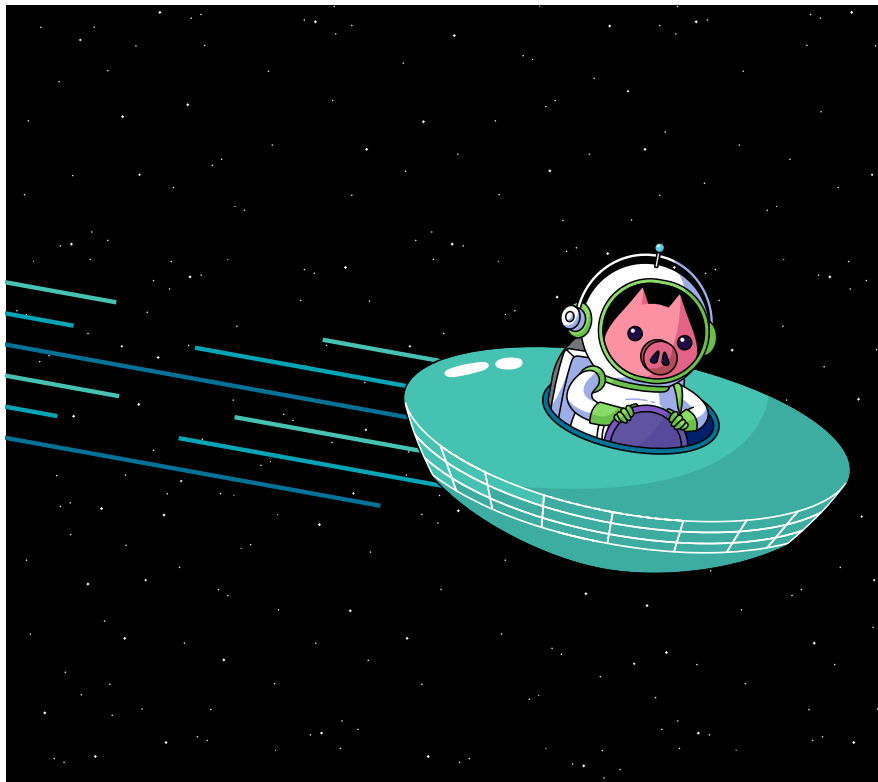
Warranty

06

Contact Information

VROOM, VROOM.

Gamma Drive is an all-analog overdrive pedal that uses a mixture of germanium, silicon and LED clipping diodes to create a perfectly balanced distortion sound that remains touch sensitive, even with the gain turned way up. Downstream from the unique Pigtronix clipping architecture, a pair of active shelving filters allow for precise control over equalization of treble and bass frequencies. These EQ controls maintain a flat frequency response in the center position while providing a 12db/octave cut or boost when adjusted. A master Volume control dishes out copious amounts of output level, allowing Gamma Drive to function as a clean boost and EQ when the Gain is turned all the way down. Gamma Drive runs on standard 9VDC but can accept power supply voltages up to 18VDC for additional headroom and increased output level.



EXPLANATION OF CONTROLS



1

Volume: Sets the output level.

2

Gain: Sets the amount of distortion.

3

Treble: Boosts or cuts high frequencies centered at 2kHz.

4

Bass: Boosts or cuts low frequencies centered at 80Hz.

Gamma Drive requires a negative tip, 9VDC power supply.
Gamma Drive does not take batteries.

PIGTRONIX LIMITED WARRANTY

Your new Pigtronix product is warranted to be free from defects in materials and workmanship for 1 year from the original date of purchase. Warranty applies only to the original retail purchaser of a registered Pigtronix product, subject to the limitations contained in this warranty.

THIS WARRANTY IS EXTENDED TO THE ORIGINAL RETAIL PURCHASER OF PIGTRONIX PRODUCTS BOUGHT ON OR AFTER JANUARY 1, 2020 ONLY AND MAY NOT BE TRANSFERRED OR ASSIGNED TO SUBSEQUENT OWNERS. IN ORDER TO VALIDATE YOUR WARRANTY, AND AS A CONDITION PRECEDENT TO WARRANTY COVERAGE HEREUNDER, YOU MUST REGISTER YOUR PRODUCT WITHIN THIRTY (30) DAYS FOLLOWING THE ORIGINAL DATE OF PURCHASE. YOUR PROOF OF PURCHASE OR SALES RECEIPT MUST ACCOMPANY ALL REQUESTS FOR WARRANTY COVERAGE— YOU MAY SUBMIT YOUR RECEIPT ON THE REGISTRATION FORM. IF YOU DO NOT REGISTER THE PRODUCT WITHIN 30 DAYS OF PURCHASE, YOUR PRODUCT WILL NOT BE SERVICED UNDER WARRANTY.

If your product is destroyed, lost or damaged beyond repair while in the possession of Pigtronix for repair, Pigtronix will replace that product with one of the same or most similar style of a value not in excess of the original purchase price of your pedal. Any insurance covering the pedal, including but not limited to collector's value insurance, must be carried by you at your expense.

This warranty covers the cost of both labor and materials on repairs deemed necessary by our Customer Service Representative.

THIS WARRANTY DOES NOT COVER:

- Any product that has been altered or modified in any way or upon which the serial number has been tampered with or altered.
- Any product whose warranty has been altered or upon which false information has been given.
- Any product that has been damaged due to misuse, negligence, accident, or improper operation.
- The subjective issue of tonal characteristics.
- Shipping damages of any kind.
- Any product that has been subjected to extremes of humidity or temperature
- Normal wear and tear
- Any product that has been purchased from an unauthorized dealer, or upon which unauthorized repair or service has been performed.

PIGTRONIX MAKES NO OTHER EXPRESS WARRANTY OF ANY KIND WHATSOEVER. ALL IMPLIED, WARRANTIES, INCLUDING WARRANTIES OF MERCHANTABILITY AND FITNESS FOR A PARTICULAR PURPOSE, EXCEEDING THE SPECIFIC PROVISIONS OF THIS WARRANTY ARE HEREBY DISCLAIMED AND EXCLUDED FROM THIS WARRANTY. SOME STATES AND/OR COUNTRIES DO NOT ALLOW THE EXCLUSION OR LIMITATION OF IMPLIED WARRANTIES SO THAT THE ABOVE MAY NOT APPLY TO YOU. PIGTRONIX SHALL NOT BE LIABLE FOR ANY SPECIAL, INDIRECT CONSEQUENTIAL, INCIDENTAL OR OTHER SIMILAR DAMAGES SUFFERED BY THE PURCHASER OR ANY THIRD PARTY, INCLUDING, WITHOUT LIMITATION. DAMAGES FOR LOSS OF PROFITS OR BUSINESS OR DAMAGES RESULTING FROM USE OR PERFORMANCE OF THE PRODUCT, WHETHER IN CONTRACT OR IN TORT, EVEN IF PIGTRONIX OR ITS AUTHORIZED REPRESENTATIVE HAS BEEN ADVISED OF THE POSSIBILITY OF SUCH DAMAGES, AND PIGTRONIX SHALL NOT BE LIABLE FOR ANY EXPENSES, CLAIMS, OR SUITS ARISING OUT OF OR RELATING TO ANY OF THE FOREGOING.

Steps To File for Warranty Coverage:

1. Register your new guitar at <http://pigtronix.com/warranty>
2. Complete the warranty request form available at <http://pigtronix.com/support> and we will handle it from there!

CONTACT INFORMATION

Address

Bond Audio LLC
141 W 28th St, Floor 4
New York, NY, 10001

Phone

631-331-7447

Email

info@pigtronix.com

Warranty Service Email

support@pigtronix.com

Warranty Contact Form

pigtronix.com/warranty

Website

pigtronix.com

YouTube

youtube.com/pigtronix



**Product manuals are offered digitally in an attempt to be mindful of our environment.
We ask that you consider the same before printing at home. Thank you!**

All contents © Bond Audio LLC 2021