

PIGTRONIX

STAR EATER

User's Guide



CONTENTS

03

Introduction

04

Explanation of Controls

05

Fundamental Tones

06

Warranty

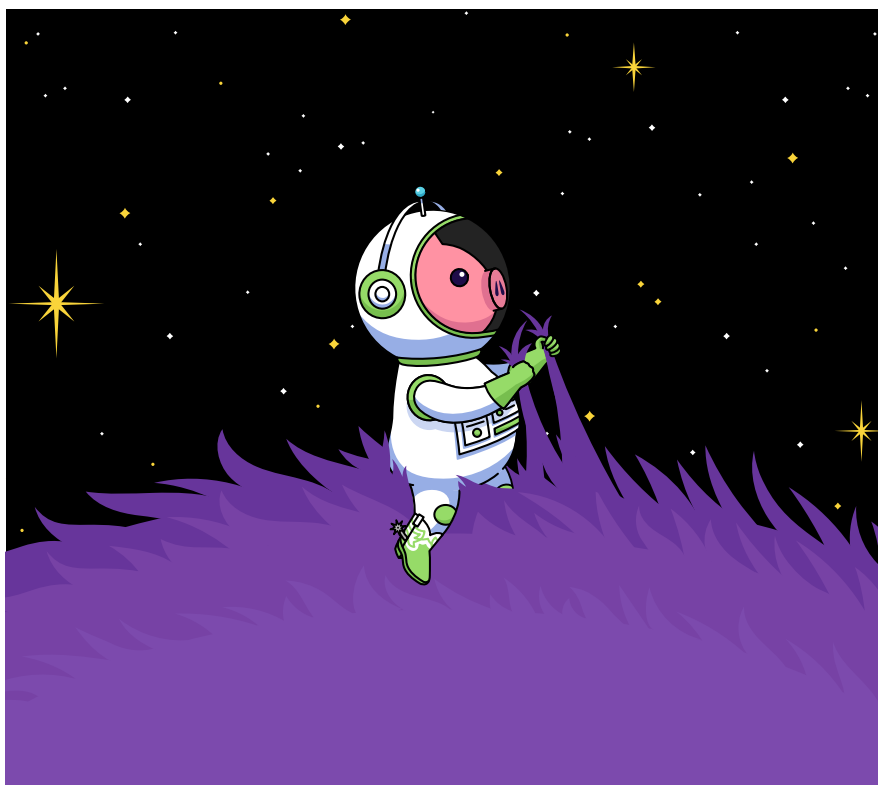
07

Contact Information

FUZZ SCULPTOR WITH AN APPETITE.

Star Eater is an all-analog, dual footswitch super-jumbo Fuzz with a footswitchable booster and variable filter stage, allowing players to easily sculpt a massive array of inspiring, unique fuzz tones. On the fuzz side, newly-available, precision-matched transistor pairs are utilized to ensure that each and every unit is perfectly dialed in to “the sweet spot” that can be so elusive to find in vintage pedals. A rocker switch provides your choice of Germanium or Silicon color. Downstream from the fuzz, a powerful booster stage drives the filter in the Star Eater. Scoop and Bump voicings for the filter can be selected via a rocker switch, drastically changing the frequency response of the Sweep control throughout its entire range. Built to last and designed to inspire, the Star Eater brings a unique approach and a new standard of performance to the world of boutique fuzz pedals.

Runs on standard 9VDC.



EXPLANATION OF CONTROLS



Footswitches

- 1 Engage:** Press to engage the fuzz. When turned off, this switch provides True Bypass for the entire unit.
- 2 Contour:** Press to turn on the filter stage located after the fuzz section.

Knobs

- 3 Hunger:** Determines the amount of gain in the fuzz.
- 4 Volume:** Determines the output level of the fuzz.

- 5 Sweep:** Sets the frequency response of the filter. *Note: The Sweep knob is only active when the Contour footswitch has been turned on.*

Rocker Switches

- 6 Voice:** Selects between Silicon (Si) and Germanium (Ge) diode clipping in the fuzz circuit.
- 7 Contour:** Changes the shape of the tone.

Star Eater requires a negative tip, 9VDC power supply.
Star Eater does not take batteries.

FUNDAMENTAL TONES

Here are the six fundamental tones that Star Eater offers.
Start with one of these and adjust knobs to taste for a multitude of sounds.

		VOICE		CONTOUR		TONE DESCRIPTION
ENGAGE	CONTOUR	Ge	Si	BUMP	SCOOP	
●	○	●	○	N/A	N/A	Spongy, bold, and warm
●	○	○	●	N/A	N/A	Tighter and more aggressive
●	●	●	○	●	○	Big and fat w/ accentuated mids
●	●	○	●	●	○	Focused, articulate, and bright
●	●	●	○	○	●	Punchy w/ lots of overtones
●	●	○	●	○	●	Early 90s massive wall of sound

PIGTRONIX LIMITED WARRANTY

Your new Pigtronix product is warranted to be free from defects in materials and workmanship for 1 year from the original date of purchase. Warranty applies only to the original retail purchaser of a registered Pigtronix product, subject to the limitations contained in this warranty.

THIS WARRANTY IS EXTENDED TO THE ORIGINAL RETAIL PURCHASER OF PIGTRONIX PRODUCTS BOUGHT ON OR AFTER JANUARY 1, 2020 ONLY AND MAY NOT BE TRANSFERRED OR ASSIGNED TO SUBSEQUENT OWNERS. IN ORDER TO VALIDATE YOUR WARRANTY, AND AS A CONDITION PRECEDENT TO WARRANTY COVERAGE HEREUNDER, YOU MUST REGISTER YOUR PRODUCT WITHIN THIRTY (30) DAYS FOLLOWING THE ORIGINAL DATE OF PURCHASE. YOUR PROOF OF PURCHASE OR SALES RECEIPT MUST ACCOMPANY ALL REQUESTS FOR WARRANTY COVERAGE— YOU MAY SUBMIT YOUR RECEIPT ON THE REGISTRATION FORM. IF YOU DO NOT REGISTER THE PRODUCT WITHIN 30 DAYS OF PURCHASE, YOUR PRODUCT WILL NOT BE SERVICED UNDER WARRANTY.

If your product is destroyed, lost or damaged beyond repair while in the possession of Pigtronix for repair, Pigtronix will replace that product with one of the same or most similar style of a value not in excess of the original purchase price of your pedal. Any insurance covering the pedal, including but not limited to collector's value insurance, must be carried by you at your expense.

This warranty covers the cost of both labor and materials on repairs deemed necessary by our Customer Service Representative.

THIS WARRANTY DOES NOT COVER:

- Any product that has been altered or modified in any way or upon which the serial number has been tampered with or altered.
- Any product whose warranty has been altered or upon which false information has been given.
- Any product that has been damaged due to misuse, negligence, accident, or improper operation.
- The subjective issue of tonal characteristics.
- Shipping damages of any kind.
- Any product that has been subjected to extremes of humidity or temperature
- Normal wear and tear
- Any product that has been purchased from an unauthorized dealer, or upon which unauthorized repair or service has been performed.

PIGTRONIX MAKES NO OTHER EXPRESS WARRANTY OF ANY KIND WHATSOEVER. ALL IMPLIED, WARRANTIES, INCLUDING WARRANTIES OF MERCHANTABILITY AND FITNESS FOR A PARTICULAR PURPOSE, EXCEEDING THE SPECIFIC PROVISIONS OF THIS WARRANTY ARE HEREBY DISCLAIMED AND EXCLUDED FROM THIS WARRANTY. SOME STATES AND/OR COUNTRIES DO NOT ALLOW THE EXCLUSION OR LIMITATION OF IMPLIED WARRANTIES SO THAT THE ABOVE MAY NOT APPLY TO YOU. PIGTRONIX SHALL NOT BE LIABLE FOR ANY SPECIAL, INDIRECT CONSEQUENTIAL, INCIDENTAL OR OTHER SIMILAR DAMAGES SUFFERED BY THE PURCHASER OR ANY THIRD PARTY, INCLUDING, WITHOUT LIMITATION. DAMAGES FOR LOSS OF PROFITS OR BUSINESS OR DAMAGES RESULTING FROM USE OR PERFORMANCE OF THE PRODUCT, WHETHER IN CONTRACT OR IN TORT, EVEN IF PIGTRONIX OR ITS AUTHORIZED REPRESENTATIVE HAS BEEN ADVISED OF THE POSSIBILITY OF SUCH DAMAGES, AND PIGTRONIX SHALL NOT BE LIABLE FOR ANY EXPENSES, CLAIMS, OR SUITS ARISING OUT OF OR RELATING TO ANY OF THE FOREGOING.

Steps To File for Warranty Coverage:

1. Register your new guitar at **<http://pigtronix.com/warranty>**
2. Complete the warranty request form available at **<http://pigtronix.com/support>** and we will handle it from there!

CONTACT INFORMATION

Address

Bond Audio LLC
141 W 28th St, Floor 4
New York, NY, 10001

Warranty Service Email

support@pigtronix.com

Warranty Contact Form

pigtronix.com/warranty

Phone

631-331-7447

Website

pigtronix.com

Email

info@pigtronix.com

YouTube

youtube.com/pigtronix



**Product manuals are offered digitally in an attempt to be mindful of our environment.
We ask that you consider the same before printing at home. Thank you!**

All contents © Bond Audio LLC 2022