

PIGTRONIX

COSMOSIS

User's Guide



CONTENTS

03

Introduction

04

Explanation of Controls

07

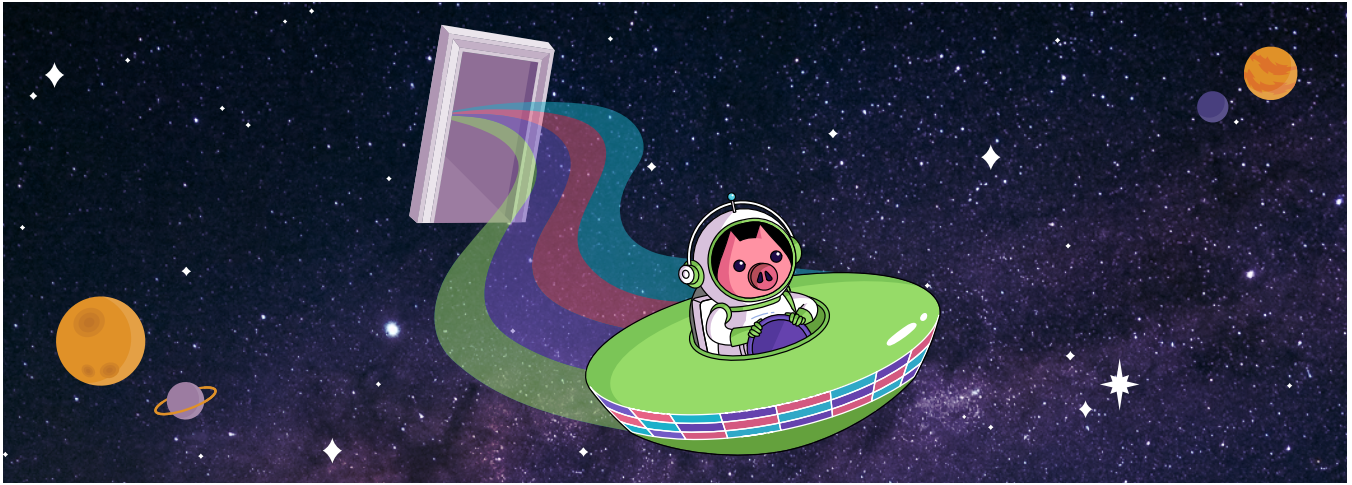
Presets

08

Warranty

09

Contact Information



MORPH ACROSS THE SPACETIME SPECTRUM.

Years in the making and the first of its kind, Cosmosis is a stereo, high-fidelity ambient reverb that allows musicians to tailor three original spaces—Theatre, Temple, and Cosmos—as well as manipulate them in real time. In addition to controls for the size of the reverb, wet/dry blend, and filtering, Cosmosis features a unique Morph function that allows musicians to alter their reverb settings in real-time by pressing the left footswitch.

The three space algorithms found inside of Cosmosis are all-original and truly unique. Theatre puts the player in a variable room that ranges from cozy to highly reflective using multiple parallel short reverberators. Temple occupies a dramatic, large indoor space by implementing numerous long reflections in both parallel and series. And Cosmos creates an enormous spectrum of heavenly reverb derived from the harmonic content it's fed.

The Morph feature found in Cosmosis provides a simple way for players to trigger a gradual change to various reverb parameters over a specified amount of time set by the accompanying Morph Rate knob. Players can set both “red” and “green” values on their Tone, Blend, and Size knobs, then engage the Morph footswitch to oscillate between the two different sets of reverb parameters at their desired rate. Any combination of knobs can be assigned to morph. Create elegant morphs for subtle movement or sweeping, cinematic morphs for dramatic sound design effects. Save up to four custom reverb presets, including morphing.

Cosmosis runs on standard 9VDC at 100mA power.

EXPLANATION OF CONTROLS



Knobs

1 Size

Sets the size of the reverb space.

2 Blend

Sets the balance between wet (reverb) and dry (clean signal).

3 Tone

Clockwise from noon, this control applies a high-pass filter, making the reverb sound brighter. Counter-clockwise from noon, this control applies a low-pass filter, making the reverb sound darker.

4 Morph Rate

Sets the amount of time it takes for parameters (size, blend, tone, rate) to change values when the morph function is triggered.

5 Engage Footswitch

Pressing the ENGAGE footswitch toggles between bypass and effect on.

6 Morph Footswitch

Pressing the MORPH footswitch begins oscillation between red and green states for whatever combination of parameters have been assigned to morph. Pressing the MORPH footswitch again parks the oscillation at whichever state it was heading toward (red or green). When parked, a double-tap engages a one-time morph from red to green or vice versa.

A long press of the MORPH switch enters Preset Select mode. Once you have entered the Preset Select mode, the currently selected red preset LED will get dimmer. A short press on the MORPH switch will move up one preset and a long press will move down one preset. Once the desired preset is queued, pressing the ENGAGE foot switch will activate it. When the footswitch is used to load a preset, the bypass status of the effect will not change.

Rear Panel I/O

7 In 1

Use this input for mono sound sources.

8 In 2

Use this input for the second input of a stereo signal. When nothing is connected to Input 2, the signal from Input 1 is automatically passed to Input 2.

9 Out 1

Main audio output. This jack expects a standard [TS] ¼" instrument cable. Amp, mixer, or DI goes here.

10 Out 2

Second audio output. Use Out 2 for stereo instruments or when you want to split a mono signal so that it can be output to two separate destinations.

11 Remote

This ¼" TRS input allows for remote control via a passive TRS remote switch.

12 Power

Cosmosis runs on 9VDC @100mA power using a standard 2.1mm Neg. tip power supply.

Morph Assign and Knob Behavior

To enable morphing for any combination of the 4 on-board knobs, push to toggle through the 4 LEDs that represent the 4 knobs. The LED corresponding to the currently selected knob will blink. Press and hold to assign that knob to morph. Press and hold again to turn off the morph assignment. When a knob is assigned to morph, Cosmosis will remember any changes to the knob positions in both red and green states. When a knob that is assigned to morph is changed during a morph, the new value is memorized when the morph reaches the destination color. When a morph assignment is turned off, any previously memorized values for red/green are discarded.

PRESETS

Preset Select

Push to toggle through presets, press and hold to select. To save a preset after making changes, press and hold. Presets can be toggled and selected using only footswitches.

Space Select

Push to toggle through 3 available reverb spaces.

Presets

The 4 LEDs above the ENGAGE footswitch indicate which preset is currently selected. Pressing the push button above the ENGAGE switch cycles through the 4 available presets. When a new preset is selected, the corresponding LED will blink. Press and hold the push button (or hit the ENGAGE footswitch) to load the selected preset. To save a preset after making changes, press and hold the push button. This action will cause the current preset LED to double-blink. If you want to save to over the current preset, press and hold the push button to save. If you want to save to a different preset, press the push button until the desired LED is double blinking. Then press and hold the push button to save. If you want to exit the preset save without saving anything, press either the ENGAGE footswitch or MORPH footswitch.

Remote Switch

The Cosmosis is compatible with a single, dual, or triple footswitch momentary remote using a TRS (balanced ¼") cable. The Remote switch can be used to select between the three spaces as follows:

Tip to sleeve = Theatre

Tip and ring to sleeve = Temple

Ring to sleeve = Cosmos

The Remote switch can also be made to control PRESET SELECT by pushing and holding the preset selector switch during boot up. When this mode is activated, you can still cycle through the three reverb spaces using the middle button of our 3-button universal remote switch. The remote switch functions in preset select mode are as follows:

Tip to sleeve = Toggle Preset 1 & 2

Ring to sleeve = Toggle Preset 3 & 4

Tip and ring to sleeve = Cycle between the 3 reverb spaces

Boot Options

You can press and hold certain switches during boot up to toggle special functions:

Engage Switch = TRAILS: Disconnects delay line input but leaves delay line output connected in bypass for natural decay of reverb after bypass.

Preset = REMOTE SWITCH control mode: Toggles remote switch functionality between Preset Selection and Space Selection.

Both Footswitches = FACTORY RESET: Restores the original factory presets that shipped with Cosmosis. Any preset data you have previously saved will be erased.

PIGTRONIX LIMITED WARRANTY

Your new Pigtronix product is warranted to be free from defects in materials and workmanship for 1 year from the original date of purchase. Warranty applies only to the original retail purchaser of a registered Pigtronix product, subject to the limitations contained in this warranty.

THIS WARRANTY IS EXTENDED TO THE ORIGINAL RETAIL PURCHASER OF PIGTRONIX PRODUCTS BOUGHT ON OR AFTER JANUARY 1, 2020 ONLY AND MAY NOT BE TRANSFERRED OR ASSIGNED TO SUBSEQUENT OWNERS. IN ORDER TO VALIDATE YOUR WARRANTY, AND AS A CONDITION PRECEDENT TO WARRANTY COVERAGE HEREUNDER, YOU MUST REGISTER YOUR PRODUCT WITHIN THIRTY (30) DAYS FOLLOWING THE ORIGINAL DATE OF PURCHASE. YOUR PROOF OF PURCHASE OR SALES RECEIPT MUST ACCOMPANY ALL REQUESTS FOR WARRANTY COVERAGE— YOU MAY SUBMIT YOUR RECEIPT ON THE REGISTRATION FORM. IF YOU DO NOT REGISTER THE PRODUCT WITHIN 30 DAYS OF PURCHASE, YOUR PRODUCT WILL NOT BE SERVICED UNDER WARRANTY.

If your product is destroyed, lost or damaged beyond repair while in the possession of Pigtronix for repair, Pigtronix will replace that product with one of the same or most similar style of a value not in excess of the original purchase price of your pedal. Any insurance covering the pedal, including but not limited to collector's value insurance, must be carried by you at your expense.

This warranty covers the cost of both labor and materials on repairs deemed necessary by our Customer Service Representative.

THIS WARRANTY DOES NOT COVER:

- Any product that has been altered or modified in any way or upon which the serial number has been tampered with or altered.
- Any product whose warranty has been altered or upon which false information has been given.

- Any product that has been damaged due to misuse, negligence, accident, or improper operation.
- The subjective issue of tonal characteristics.
- Shipping damages of any kind.
- Any product that has been subjected to extremes of humidity or temperature
- Normal wear and tear
- Any product that has been purchased from an unauthorized dealer, or upon which unauthorized repair or service has been performed.

PIGTRONIX MAKES NO OTHER EXPRESS WARRANTY OF ANY KIND WHATSOEVER. ALL IMPLIED, WARRANTIES, INCLUDING WARRANTIES OF MERCHANTABILITY AND FITNESS FOR A PARTICULAR PURPOSE, EXCEEDING THE SPECIFIC PROVISIONS OF THIS WARRANTY ARE HEREBY DISCLAIMED AND EXCLUDED FROM THIS WARRANTY. SOME STATES AND/OR COUNTRIES DO NOT ALLOW THE EXCLUSION OR LIMITATION OF IMPLIED WARRANTIES SO THAT THE ABOVE MAY NOT APPLY TO YOU. PIGTRONIX SHALL NOT BE LIABLE FOR ANY SPECIAL, INDIRECT CONSEQUENTIAL, INCIDENTAL OR OTHER SIMILAR DAMAGES SUFFERED BY THE PURCHASER OR ANY THIRD PARTY, INCLUDING, WITHOUT LIMITATION. DAMAGES FOR LOSS OF PROFITS OR BUSINESS OR DAMAGES RESULTING FROM USE OR PERFORMANCE OF THE PRODUCT, WHETHER IN CONTRACT OR IN TORT, EVEN IF PIGTRONIX OR ITS AUTHORIZED REPRESENTATIVE HAS BEEN ADVISED OF THE POSSIBILITY OF SUCH DAMAGES, AND PIGTRONIX SHALL NOT BE LIABLE FOR ANY EXPENSES, CLAIMS, OR SUITS ARISING OUT OF OR RELATING TO ANY OF THE FOREGOING.

Steps To File for Warranty Coverage:

1. Register your new guitar at **<http://pigtronix.com/warranty>**
2. Complete the warranty request form available at **<http://pigtronix.com/support>** and we will handle it from there!

CONTACT INFORMATION

Address

Bond Audio LLC
141 W 28th St, Floor 4
New York, NY, 10001

Phone

631-331-7447

Email

info@pigtronix.com

Warranty Service Email

support@pigtronix.com

Warranty Contact Form

pigtronix.com/warranty

Website

pigtronix.com

YouTube

youtube.com/pigtronix



**Product manuals are offered digitally in an attempt to be mindful of our environment.
We ask that you consider the same before printing at home. Thank you!**